

Kiosk Design



Acton Land Stewardship Committee
Acton, Massachusetts

New Kiosk Design

The design goals are:

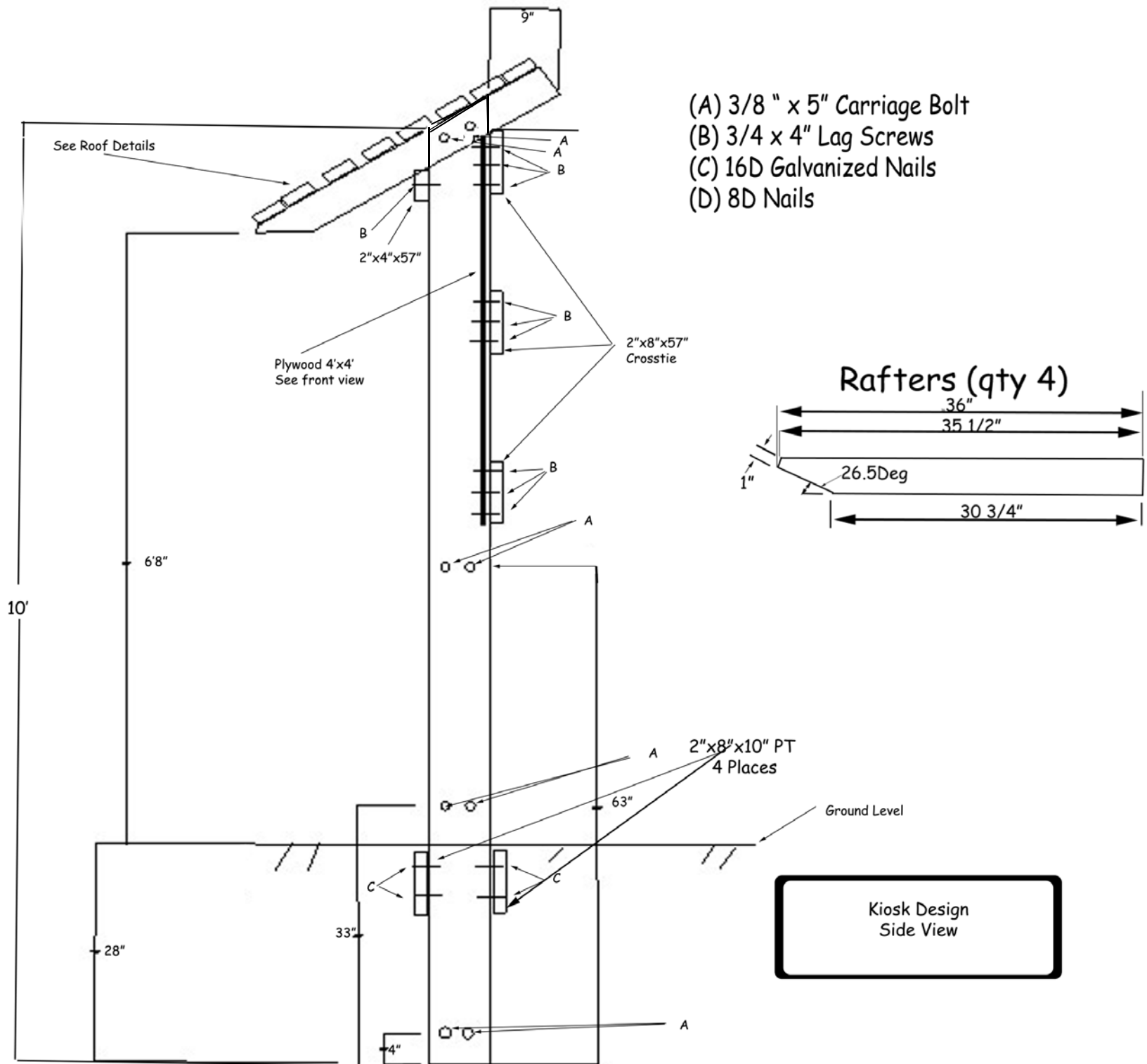
1. Lower cost.
2. Standard dimensional lumber.
3. Lower weight roof.
4. Recessed notice board.

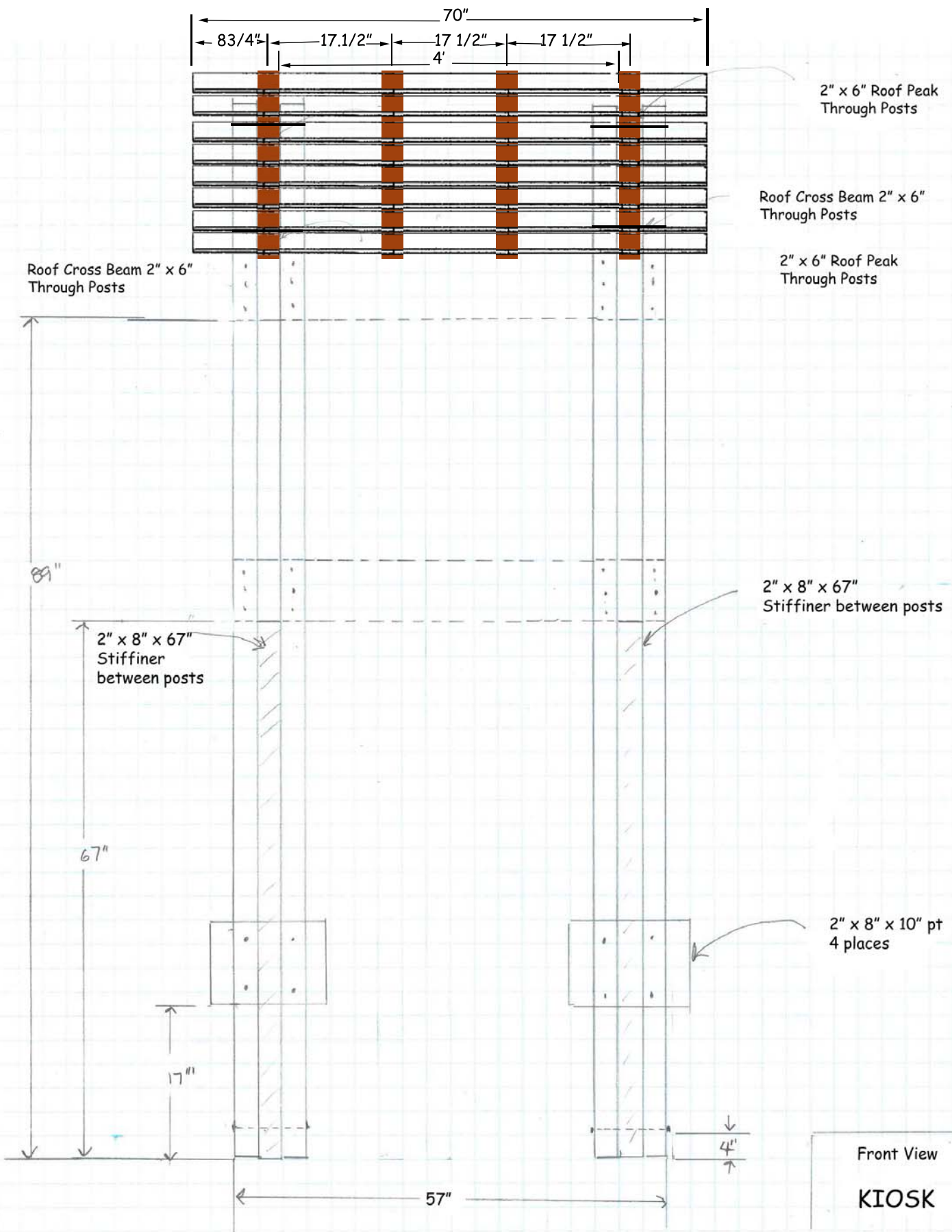
Assembly Notes

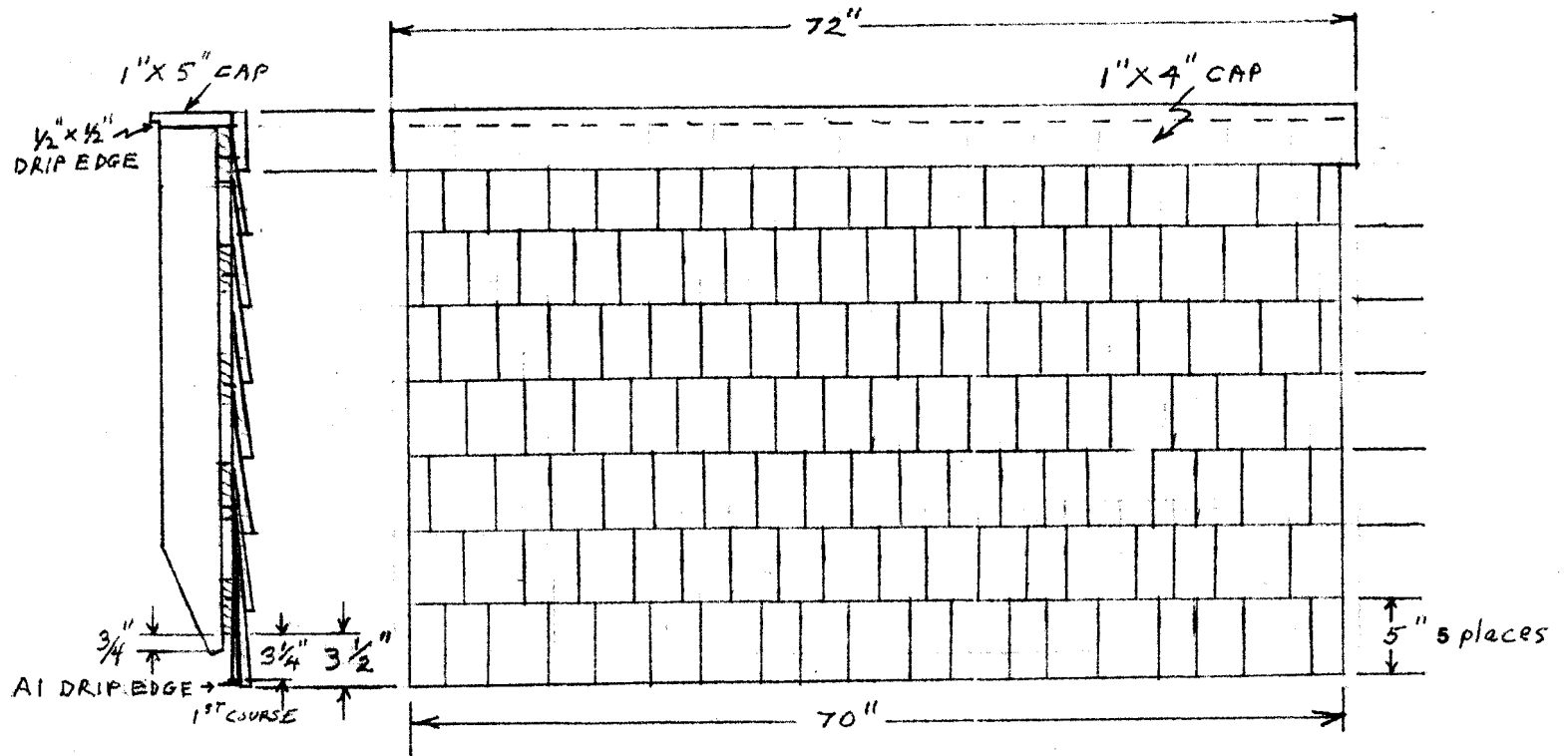
It will be convenient to make templates from cardboard from the designs provided to quickly locate hardware hole locations.

Before bolting the top crosstie to the vertical supports, clamp a roof rafter and 1/16" shims between both pairs of 10' uprights. This is to provide a little clearance for the outer roof rafters to slip between the upright supports when the roof is placed on the erected kiosk.

With two of the rafters so clamped nail the bottom and top roof sheathing to the rafters to set the spacing. The roof frame can then be removed and the remaining rafters and roof sheathing added. Once this is done the roof can be shingled with its drip edges.

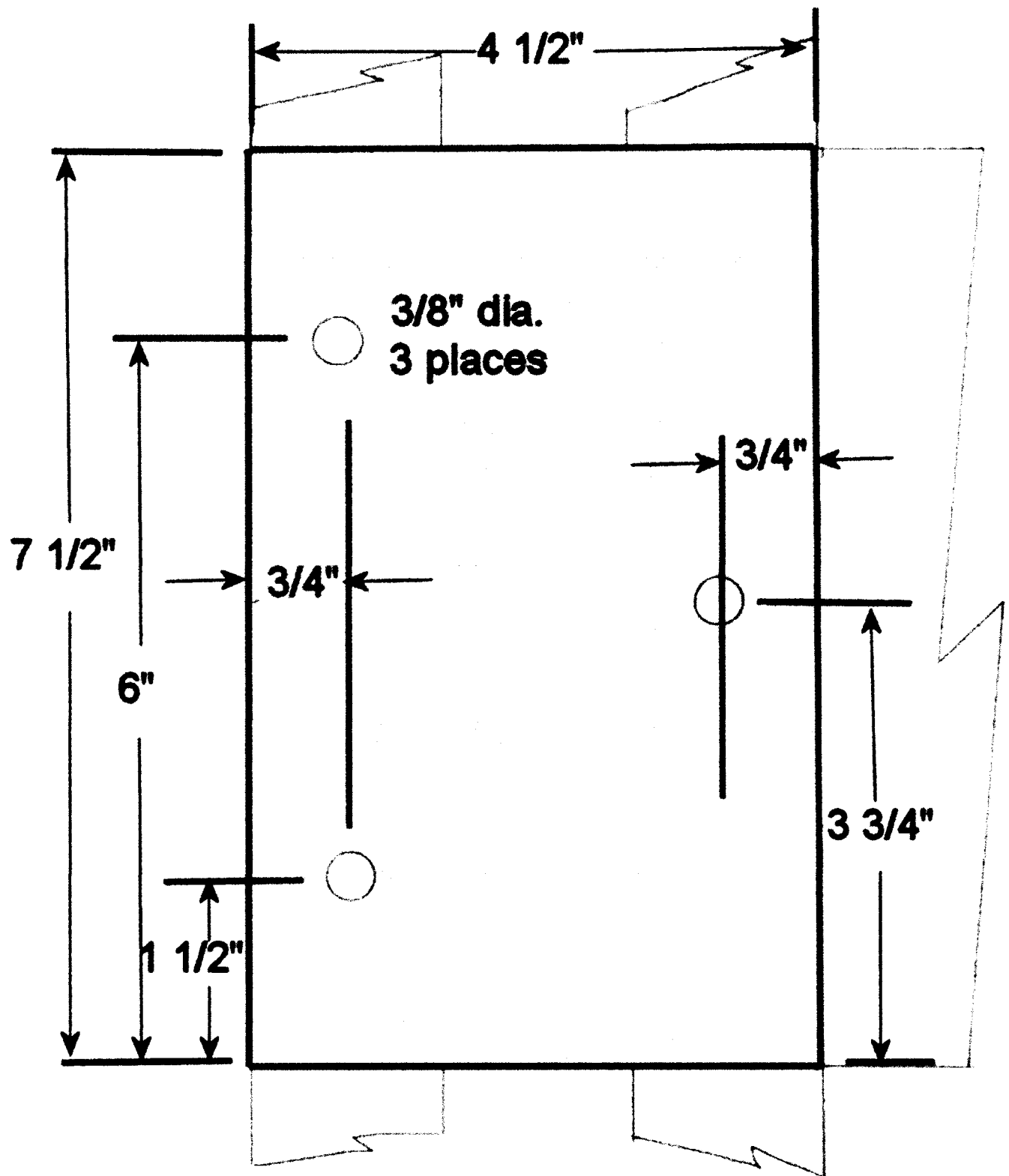




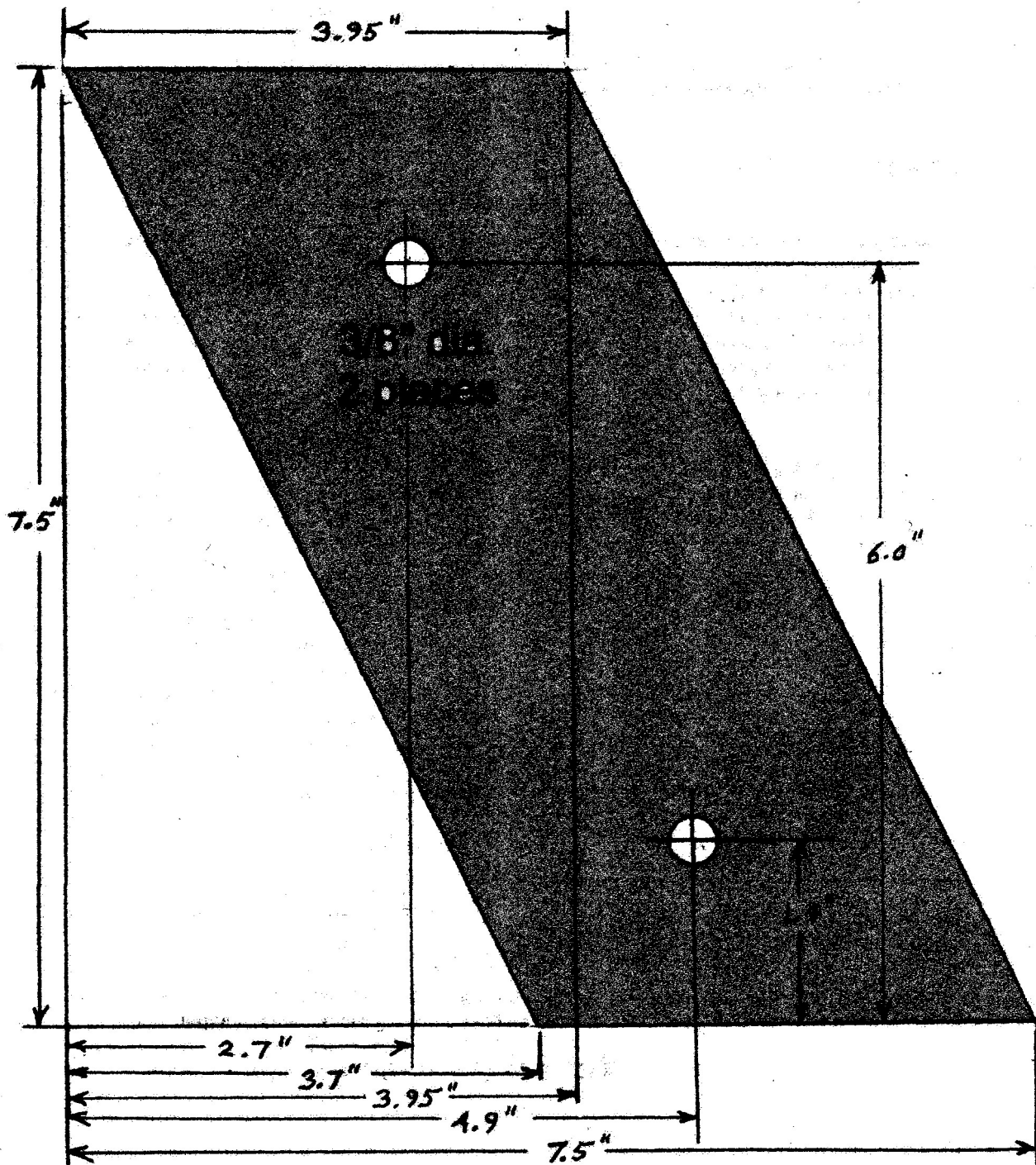


Roof Shingling
Not to scale

Crosstie Lag Screw Hole Template



Rafter Bolt Template



Kiosk Materials List

Quantity	Material	Description	Unit Cost	Cost
4	2"x8"x10' PT pine	4- 10' vertical supports		
2	2"x8"x8' PT pine	2-67" stiffeners 4 -1 O" dead men		
1	2"x8"x8' PT pine	1 -57" crosstie		
1	2"x8"x10' PT pine	2 -57" crossties		
2	2"x4"x10' PT pine	1 -57" crosstie, 4 -36" rafters		
1	5/4"x6"x12' PT pine	1-4"x6', 1-5"x6' ridge caps		
4	5/4"x6"x6' PT pine	8 -5/4"x3"x6' sheathing		
1	8"x10' Al brown drip edge	6' drip edge		
1	box	#1 grade Western Red Cedar shingles		
1	4' x 4' CDX Plywood	4' x 4' plywood for panel		
1	8" x 6' copper flashing (for wet installations)	8" x 6' copper flashing under roof cap. Reduces buildup of moss and rot in wet locations		
12	3/8"x5"	galvanized carriage bolts		
20	3/8"x4"	galvanized lag screw		
32	3/8"	galvanized flat washers		
12	3/8"	galvanized hex nut		
15	1 1/2"-12 46	stainless steel flathead screws for attaching rafters to sheathing		
46	8d (2 1/2")	galvanized nails		
20	16d (3 1/2")	galvanized nails		
1 lb box	4d (1 1/2")	Stainless steel ring shank siding nails		
			Total	